

# ABOUT US

ESTABLISHED 1981

[www.NAPractice.org](http://www.NAPractice.org)

[LinkedIn](#)

[YouTube](#)

# Table of CONTENTS

03

WHO WE ARE

SIGNATURE PROGRAMS

06

04

VISION / MISSION / VALUES

MEMBERSHIP

10

05

ACADEMIES

ORGANIZATIONAL STRUCTURE

14

17

NATIONAL INTERPROFESSIONAL HEALTH CARE MONTH

---

# WHO ARE WE & WHAT DO WE STAND FOR?

NAP is a non-profit organization founded in 1981 to advise governmental bodies on our healthcare system. Distinguished practitioners and scholars are elected by their peers from multiple different health professions to join the only interprofessional group of healthcare practitioners and scholars dedicated to supporting affordable, accessible, coordinated quality healthcare for all.

The National Academies of Practice is dedicated to affordable, accessible, coordinated quality healthcare for all. We believe that healthcare practice that has an interprofessional foundation and addresses the whole person provides better healthcare and better preventive care.



# MISSION

**Advancing Interprofessional Education, Scholarship, Research, Practice and Public Policy,**

**we:** (1) Educate and inform our members and others; (2) Facilitate collaborative scholarship and research opportunities; (3) Recruit, engage, retain, and mentor our network of members; (4) Advocate the value of interprofessional practice and improve healthcare and policy for all

# VISION



National Academies of Practice is the alliance of professionals collaborating to transform health and well-being.

*Core Values*

**COLLABORATION | PATIENT-CENTEREDNESS | INCLUSIVITY | INTERCONNECTEDNESS**

# Academies

## MULTIPLE HEALTH PROFESSIONS JOINING TOGETHER

The National Academies of Practice was founded in 1981 to advise governmental bodies on our health care system. **It is the only interdisciplinary group of health care practitioners dedicated to these issues.** Distinguished Practitioners, Scholars and Policy Fellows are elected by their peers from multiple different health professions.

---

ATHLETIC TRAINING  
AUDIOLOGY  
DENTISTRY  
NURSING  
NUTRITION & DIETETICS  
OCCUPATIONAL THERAPY  
OPTOMETRY  
PHARMACY

PHYSICAL THERAPY  
PHYSICIAN  
PODIATRIC MEDICINE  
PSYCHOLOGY  
PUBLIC HEALTH  
RESPIRATORY CARE  
SOCIAL WORK  
SPEECH-LANGUAGE PATHOLOGY  
VETERINARY MEDICINE

# SIGNATURE PROGRAMS



## ANNUAL MEETING & FORUM



# JOURNAL



## EDUCATIONAL RESOURCES

# *Annual* **MEETING & FORUM**

NAP's Annual Meeting & Forum boasts highly engaged and interactive participation, with hundreds of attendees from all NAP Academies. The conference includes keynote speakers, educational sessions, interaction with colleagues, and celebrating and welcoming new members to NAP.



*Read the*  
**JOURNAL** OF INTERPROFESSIONAL  
EDUCATION & PRACTICE

JIEP is the official journal of NAP practice, policy, and research. JIEP is devoted to dissemination of high-quality articles covering the full spectrum of interprofessional healthcare education and practice.

[www.jieponline.com](http://www.jieponline.com)

[@IPE\\_Journal](https://twitter.com/IPE_Journal)

[www.NAPpractice.org](http://www.NAPpractice.org)





# EDUCATIONAL RESOURCES

## SOCIAL DETERMINANTS OF MENTAL HEALTH

- Final Guide Compendium
- Social Determinants of Mental Health for IPE
- Case History Adolescence
- Case History Pregnancy
- Case History Elderly

## POSITION STATEMENTS & WHITEPAPERS

- Interprofessional Collaboration
- Provision of Telehealth Services
- A Synthesis of Interprofessional Collaborative Practice Research
- *and more!*

## INTERPROFESSIONAL PRACTICE & EDUCATION LEXICON

A common lexicon provides consistent and accurate use of terminology as a critical component to support understanding of the discipline/science of interdisciplinary collaboration.

# Top 8 Reasons TO JOIN NAP

1. Community and connectedness centered on the total care of patients, families, communities, and society
2. Professional recognition by healthcare peers
3. Interprofessional and intraprofessional collaboration for scholarship, education, and practice
4. Opportunities to influence public policy through interprofessional advocacy during Capitol Hill visits and the development of position papers
5. A culture of diversity, inclusivity, mutual respect, and transparency
6. Engagement customizable to your interest and expertise
7. Professional development and well-being attuned to member needs and interests
8. Leadership development interprofessionally and intraprofessionally

# Become a **MEMBER**

NAP membership categories include:

---

ASSOCIATE MEMBER

DISTINGUISHED FELLOW

AFFILIATE MEMBER

PROFESSIONAL MEMBER

[www.NAPpractice.org](http://www.NAPpractice.org)

# DISTINGUISHED FELLOW

# FNAP

## PRACTITIONER

Individuals who have spent a significant portion (10 years or more) of their professional career in the practice and direct delivery of healthcare services. They are judged by distinguished peers to have made enduring contributions in their profession.

## SCHOLAR


Individuals with academic achievements such as significant and enduring educational and/or research contribution to practice. They are judged by distinguished peers to have made significant and enduring contributions in their profession.

## PUBLIC POLICY

Individuals who have made a significant and enduring public policy contribution to healthcare practice. They are judged by distinguished peers to have made significant contributions to interprofessional healthcare.

# PROFESSIONAL MEMBER

PNAP



Healthcare professionals from one of NAP's academies who take interest in interdisciplinary healthcare issues and have 5 or more years of experience making contributions to their field may qualify. Professional members may hold offices within Academies, except for chair or chair-elect, and participate in committees.

**[www.NAPractice.org](http://www.NAPractice.org)**

## ASSOCIATE MEMBER

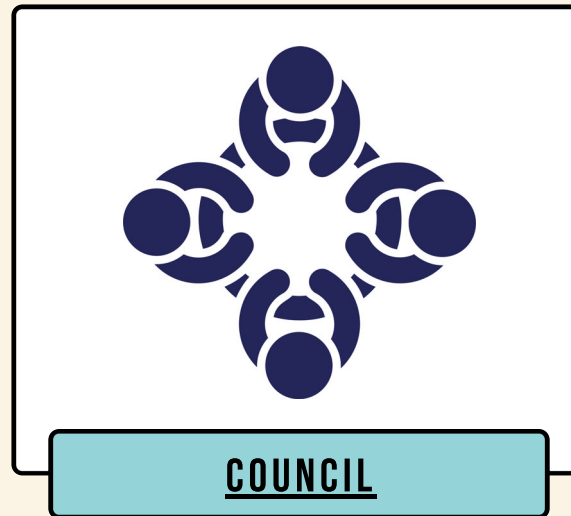
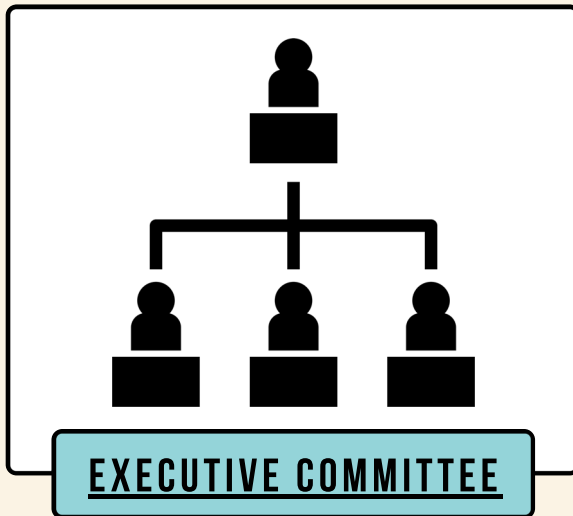
Associate Members may be healthcare professionals from any field who take interest in interdisciplinary healthcare issues, and may also be an individual who:

- does not meet the requirements to become a Distinguished Fellow or Professional Member
- a current student
- currently does not fit under the Academy system

## AFFILIATE MEMBER

Per NAP bylaws, those who qualify to be Fellows but are not US citizens, permanent resident aliens, or resident aliens, may be inducted as Affiliate Members. Affiliate Members are entitled to all privileges of membership except voting and holding office.

# ORGANIZATIONAL STRUCTURE



## **EXECUTIVE COMMITTEE**

The Executive Committee (EC) consists of NAP's Officers: President, President-Elect, Immediate Past President, Secretary/Treasurer, and various Vice Presidents, including VPs for Interprofessional Collaboration, Membership, Partnerships & Networking, Professional Development, and Public Policy. The Officers are elected by the Council and serve two-year terms.



## **COUNCIL**

The function of the NAP Council is to make decisions affecting the strategic direction, programs, and services of the organization. It is made up of all the Academy Chairs and Chairs-Elect as well as the Executive Committee and is staffed by the Executive Director. The Council meets regularly throughout the year to conduct the business of NAP.



# *Volunteer* OPPORTUNITIES

Committees & Task Forces

**EVERY CONTRIBUTION MATTERS**

AWARDS

BYLAWS

FINANCE

FORUM PLANNING

INTERPROFESSIONAL COLLABORATION

MEMBERSHIP

PUBLIC POLICY

PARTNERSHIPS & NETWORKING

PROFESSIONAL DEVELOPMENT

*April is...*

# **NATIONAL INTERPROFESSIONAL HEALTH CARE MONTH**

## **PROCLAMATION**

**Whereas**, quality health care is in the public's interest for maintenance of independence, productivity, happiness, overall welfare and well-being of society.

**Whereas**, quality health care is provided collaboratively by professionals of multiple disciplines dependent upon the health needs of the public at large.

**Whereas**, primary health care begins with health promotion, wellness, and the prevention of the very diseases and health problems that require treatment from various healthcare professionals.

**Whereas**, the complexity and breadth of health promotion, illness prevention and quality health care benefits from the diverse knowledge and skills of a range of health care professionals.

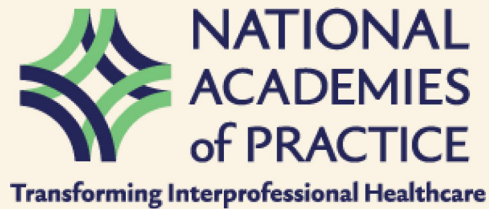
**Whereas**, health care clinicians collaborating in an interprofessional team model of service enhances not only coordination, but safe, effective and high quality health care.

**Therefore, the National Academies of Practice proclaim the month of April as**

***"National Interprofessional Health Care Month."***

NATIONAL ACADEMIES OF PRACTICE

---



*Questions?*  
**CONTACT US**

---

**[info@NAPractice.org](mailto:info@NAPractice.org)**

**859-514-9184**  
**201 E. MAIN ST., SUITE 810, LEXINGTON, KY**

**[www.NAPractice.org](http://www.NAPractice.org)**